

ALASKA DIVISION OF HOMELAND SECURITY & EMERGENCY MANAGEMENT



SITUATION REPORT 25-062 March 3, 2025

Toll-Free 1.800.478.2337

Anchorage Area 907.428.7000

SEOC 907.428.7100

<p><u>SEOC Preparedness Level</u> Level 1-Routine Operations</p>	<p>http://ready.alaska.gov</p>	<p><u>National Terrorism Advisory System:</u> Read the NTAS Bulletin here</p>
<p><u>Maritime Security (MARSEC)</u> Level:1- Minimum Appropriate Security Measures</p>	<p>WHO Novel Coronavirus Pandemic (COVID-19): 2019 Novel Coronavirus</p>	<p><u>Alaska Military Installation Force Protection</u> <u>Level:</u> FPCON Bravo</p>

(Significant changes from previous situation reports are red.)

Significant Issues:

On Thursday Feb 27, an undersea communications cable was damaged resulting in disruption of cell phone and internet services in Juneau and other SE AK communities. Damage assessment is ongoing. Impacts are still affecting several state government websites, cell phone lines and internet services in Juneau and other SE AK communities. 911 calls are still functioning normally in Juneau, though admin lines at JPD were affected. Not all service providers are affected and landlines are reported operational. This disruption of service impacted the distribution of the daily Situation Report on Friday Feb 28. Distribution restored as of 0800 Monday Mar 3.

Department of Health (DOH):

For current information, see: <https://health.alaska.gov/dph/Pages/default.aspx>
<https://health.alaska.gov/dph/Emergency/Pages/prepared/default.aspx>

NTAS Bulletin:

The U.S. Department of Homeland Security issued an updated National Terrorism Advisory Bulletin on May 24, 2023. The current and expired bulletins can be viewed at the below link.
<https://www.dhs.gov/national-terrorism-advisory-system>

Travel Alerts and Conditions:

For current driving conditions, dial 511 or visit: <https://511.alaska.gov/>

Barry Arm Landslide / Tsunami Risk:

For the latest information on the Barry Arm Landslide and Tsunami risk, click here:
<https://diggs.alaska.gov/hazards/barry-arm-landslide.html>

Earthquakes:

United States Geological Service (USGS) Earthquake Information: <http://earthquake.usgs.gov/>
National Tsunami Warning Center: <http://tsunami.gov/>

Alaska Volcanoes:

Great Sitkin Alert Level: **Watch** and Aviation Color Code: **Orange**

Mt. Spurr Alert Level: **Advisory** and Aviation Color Code: **Yellow**

Atka Complex Alert Level: **Advisory** and Aviation Color Code: **Yellow**

For Alaska Volcano updates, go to: <https://www.avo.alaska.edu/>

Air Quality Index (AQI) Advisories:

For the most up-to-date Air Quality Index Advisories:

<http://dec.alaska.gov/Applications/Air/airtoolsweb/Home/Index>

Spills of Oil and Hazardous Substances:

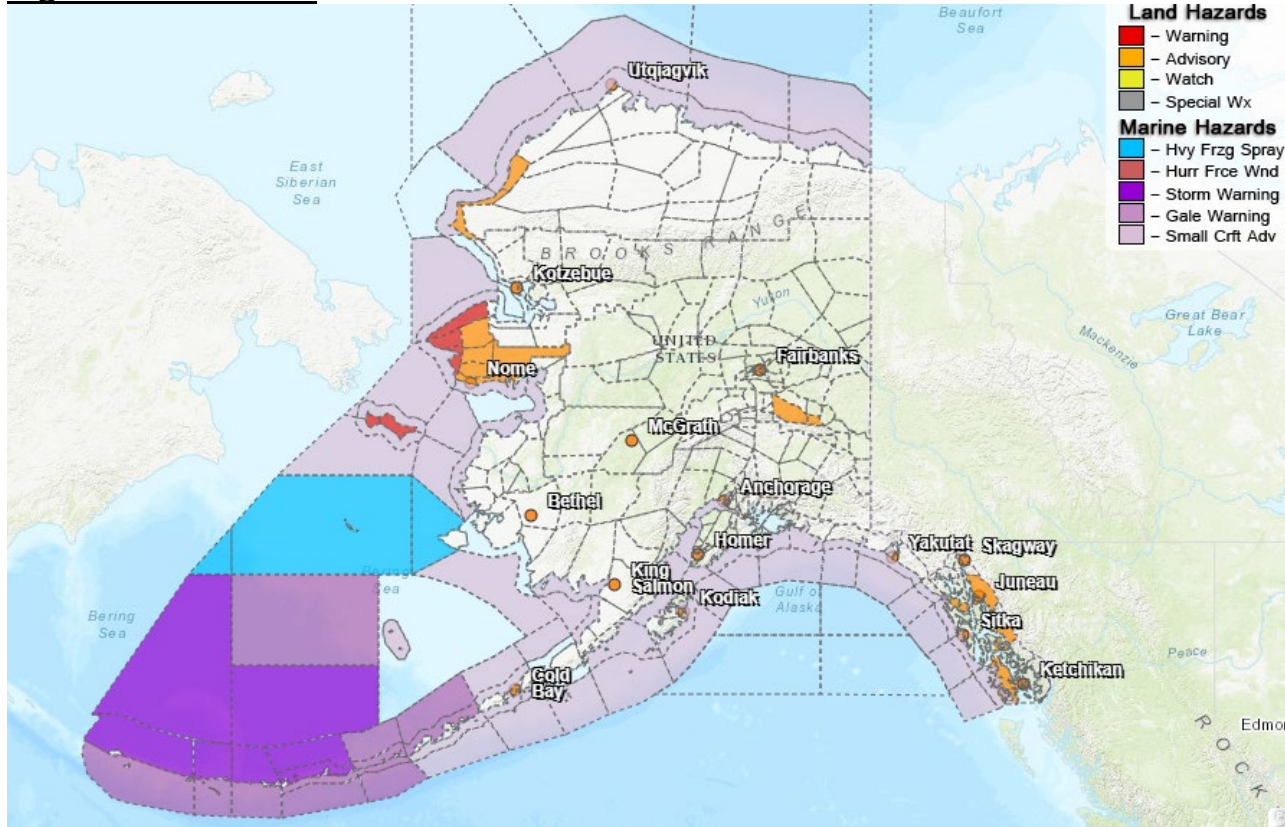
The Alaska Division of Environmental Conservation (ADEC) Spill Prevention and Response page is located at: <https://dec.alaska.gov/spar/>

Alaska Cyber Security Information:

State Employees may sign up for cybersecurity notifications and alerts at:

<https://oit.alaska.gov/security>

Significant Weather:



Winter Weather Advisory: in effect until noon today

Western Arctic Coast

Dense Fog Advisory: in effect until 9pm today

Eastern Chichagof Island; City and Borough of Juneau; Petersburg Borough; Prince of Wales Island

Winter Weather Advisory: in effect from 5pm today until 7am Wednesday

Southern Seward Peninsula Coast; Interior Seward Peninsula

Blizzard Warning: in effect from 5am Tuesday to noon Thursday

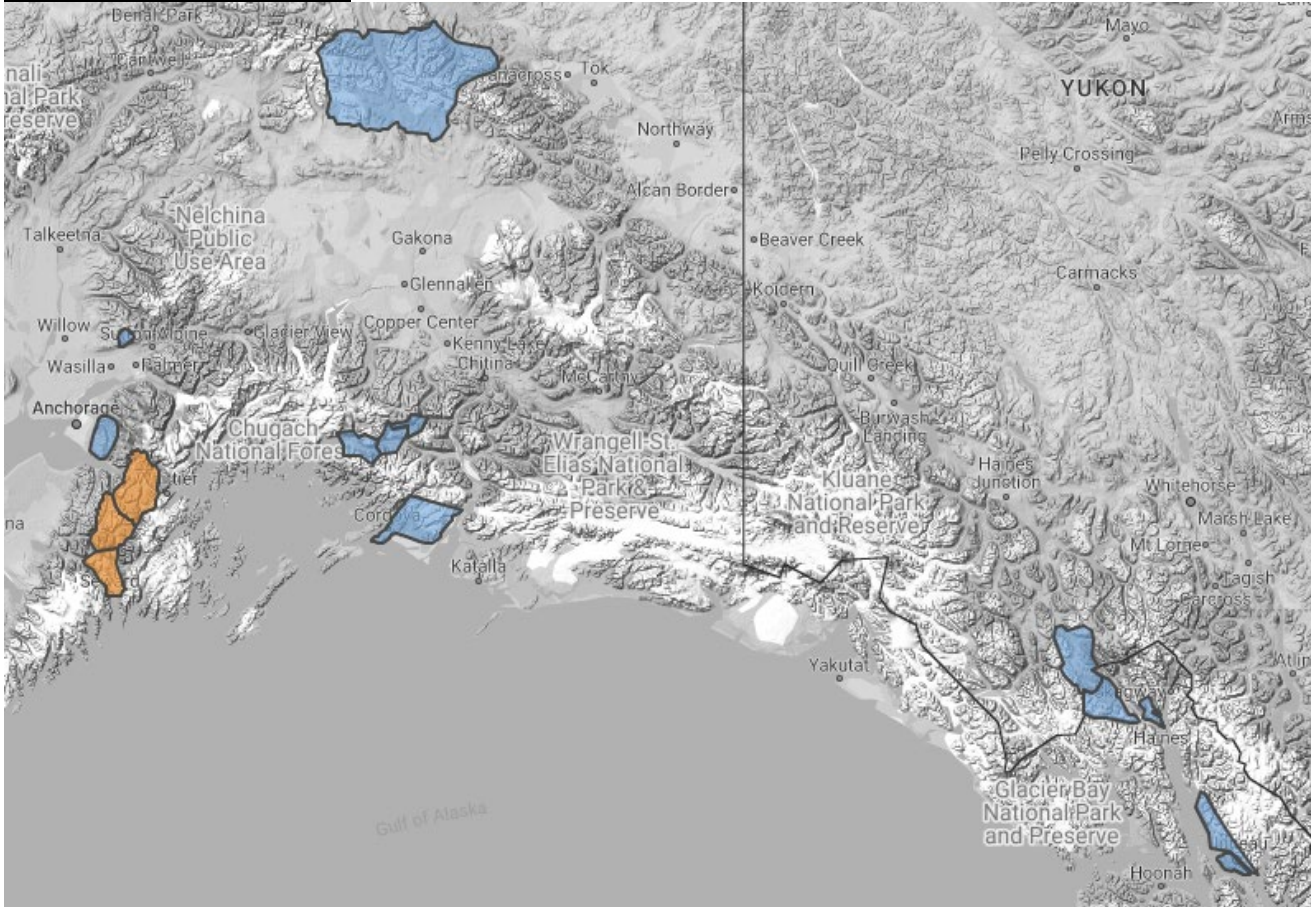
Shishmaref; Bering Strait Coast; St Lawrence Island

Wind Advisory: now in effect until noon today

Eastern Alaska Range North of Trims Camp

For more information and the most current weather, Watches / Warnings / Advisories go to:
<https://www.weather.gov/arh/>

Avalanche Conditions:



Turnagain Pass – Considerable 1,000' to 2,500, Considerable above 2,500'

Summit Lake – Moderate 1,000' to 2,500, Considerable above 2,500'

Seward and Lost Lake – Considerable 1,000 to 2,500', Considerable above 2,500'

Valdez Maritime, Intermountain, and Continental – Moderate at all levels

Hatcher Pass – Low at all levels.

For more information and the most current avalanche conditions, go to: <https://alaskasnow.org/>

The Next Situation Report will be on **March 4, 2025**. An interim report will be prompted by a significant change in the situation or the threat level. This report is posted on the internet at <https://ready.alaska.gov/sitrep>.

To register for email distribution, **PLEASE** go to:

<http://list.state.ak.us/mailman/listinfo/dhsem.situation.report>.

Direct questions regarding this report to the SEOC at 907-428-7100 or seoc@alaska.gov.